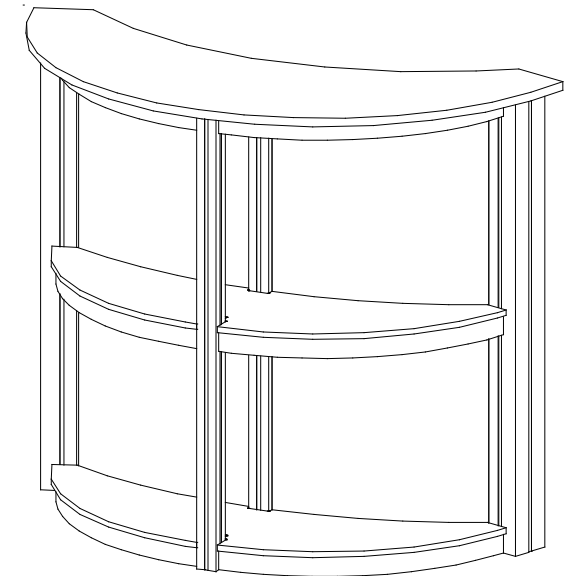
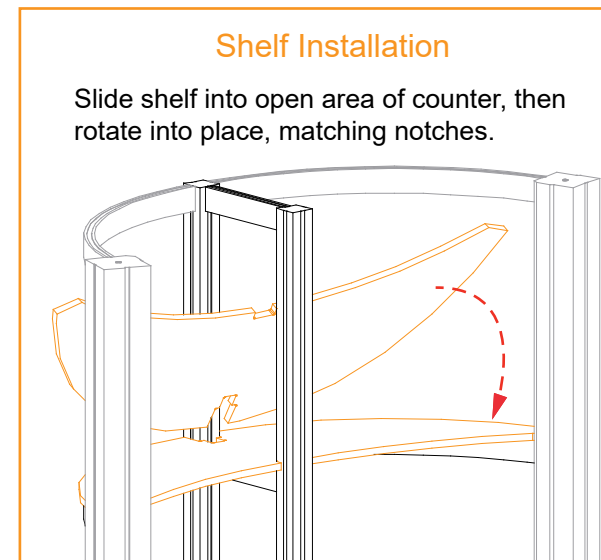


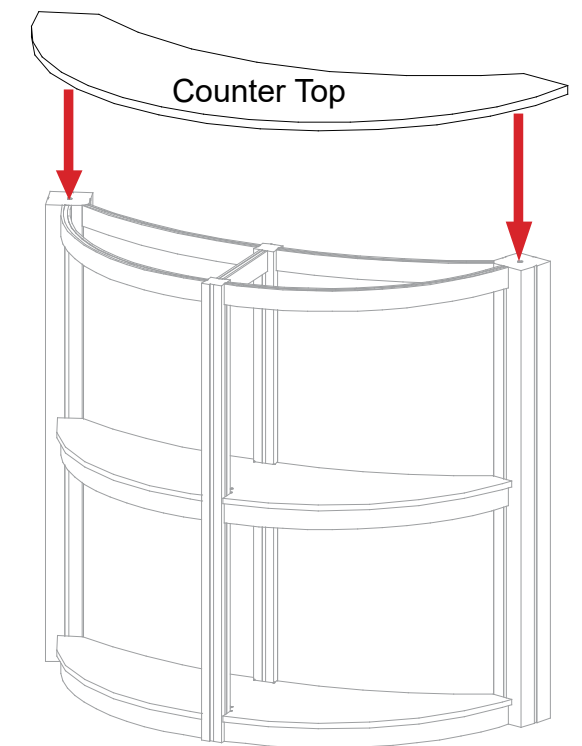
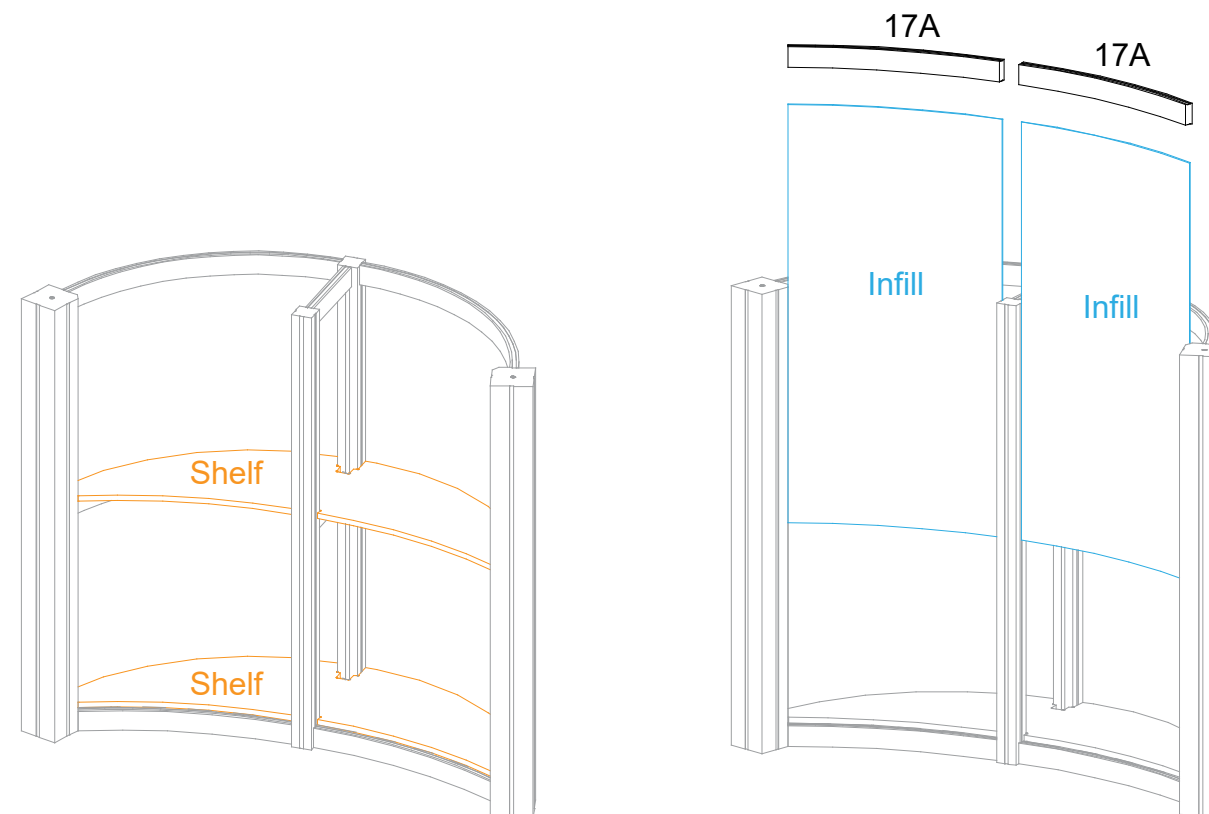
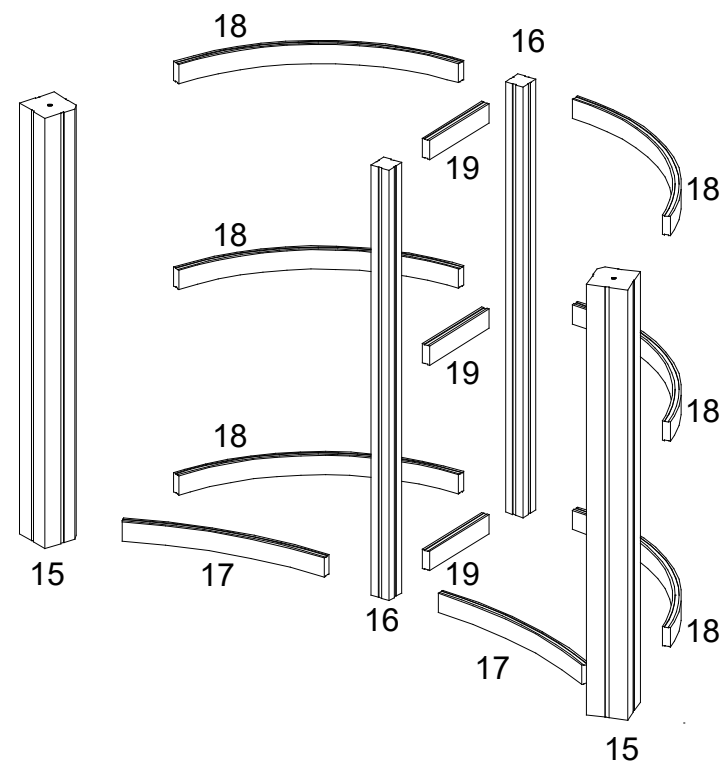
Item	Qty.	Description
15	2	40"h Q914 Vertical Extrusion
16	2	40"h S44 Vertical Extrusion
17,17A	2,2	18.669" Z45 Curved Horizontal Extrusion
18	6	25.78" Z45 Curved Horizontal Extrusion
19	3	8.562" Z45 Horizontal Extrusion

Steps:

- 1) Connect horizontals [17,18,19] to verticals [15,16] as shown.
- 2) Insert shelves into assembled base. See **Shelf Installation** detail.
- 3) Slide **infills** between verticals [15,16], then secure with horizontals [17A].
- 4) Place counter top onto assembly.



Completed Assembly



SETUP INSTRUCTIONS